

## WGAC - 2018 AGM NEWSLETTER

### MESSAGE FROM THE CHAIR

**Making business from our Country in the right way has been a focus for us this year.**



**WGAC Chairperson, Catherine Goonack (far left), and other Wunambal Gaambera Traditional Owners (Bernadette Waina, Scholastica Mangolamara, Leonie Cheinmora, Jeremy Kowan and Sebastian Djanghara) welcoming visitors at Jar Island, August 2018.**

We've had approximately 14,000\* (\*Ngauwudu 9,000 and Uunguu Coast 5,000) visitors to Wunambal Gaambera Country this year (2018) and over 90% of them have purchased our Uunguu Visitor Pass permission. This has been a tremendous effort by all. Thank you.

Delivering a quality visitor experience is an important focus for us, and we've been busy making this happen!

Our tourism training has been put into practice, building confidence amongst our people to share our knowledge and provide an authentic Uunguu Experience for all.

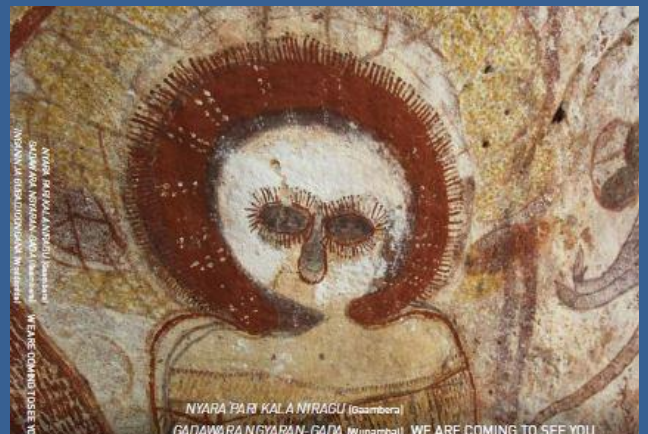
**Catherine Goonack**  
**WGAC Chairperson**

### Culture Book

With help from Dambimangari, we are publishing a book by our Elders: Nyara Pari Kala Niragu (Gaambera) and Gadawara Ngyaran-Gada (Wunambal) - **"We Are Coming To See You".**

It tells our Wanjina-Wunggurr and Gwion cultural story through our rock art in Wunambal Gaambera and Dambimangari Countries. It is for our families and to share with others.

We are looking forward to its publication in February 2019!







## MAKING BUSINESS AND SHARING OUR COUNTRY THE RIGHT WAY – it's good for all of us!

With the Uunguu Visitor Pass (UVP) in place, we now have the resources to provide formal training. Rangers and staff are being TAFE trained on Country for a Certificate 1 in Tourism.

We've already put some of this training into practice!

**The first Tourism Training group at Munurru. From left: Troy Bidd, Albert**

**Bundamurra, Hylke Vader, Jazzlyn Phillips, Flora Williams, Zarika Peurmora Clement, Colleen Mangolamara, Jermaine Willcock.**



**Ildephonse and Albert being tour guides - talking to Independent Visitors about the Wanjina rock art at Munurru Art Site 1.**



**Jeremy Kowan teaching Ildephonse Cheinmora and the other students about Munurru rock art stories.**



**The second group. From left: Jane Ballantyne (TAFE Lecturer), Ildephonse Cheinmora, Albert Bundamurra, Braiden Waina, Jermaine Willcock, Hylke Vader, Jeremy Kowan, Tabitha Kowan, Jazzlyn Phillips, Colleen Mangolamara, Rachel Beadle (UVP Manager).**



**Wunambal Gaambera students talking to APT tour group passengers at Munurru Art Site 1.**

**See our ads at the back of this newsletter for the UVP and Munurru – to feature in 2019 Kimberley Visitor Guides.**





# Uunguu Wunambal Gaambera Country

UUNGUU COAST, KIMBERLEY, WESTERN AUSTRALIA



**TAFE Lecturer, Jane Ballantyne, teaching in the Munurru Bush Classroom by King Edward River.**



"The spacious bush campsites are well worth the drive." (NSW)

"Cleanest bush toilets in the Kimberley!" (TAS)



**Wunambal Gaambera students conducting visitors' Smoking Ceremony and Welcome to Country at Munurru.**



Great for families with acres of bush to play in and wonderful river swimming. (WA)

"Beautiful, clean and well organised campground – one of our favourites. The local Rangers were lovely informative hosts." (NT)  
"The best camping spot experienced in Australia!" (International)

## MUNURRU SUCCESS

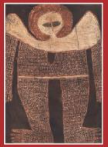
Early 2018, WGAC took over management of Munurru campground. Our visitors are super impressed by our Uunguu Rangers' work looking after the camp. Here's what they are saying:

"This is the quietest and most uncrowded camp I have enjoyed travelling around Australia. All campgrounds should be like this. Ideally placed close to a beautiful river and waterfalls. Perfect swimming, wonderful river walks. The staff are very helpful, friendly people." (QLD)



"This is a beautiful part of Australia full of rich Aboriginal culture and history. I recommend getting to know more about the Traditional Owners, the Wunambal Gaambera people to truly enhance your visit. We are blessed to be welcomed to this spectacular country." (Trip Advisor)





## JAR JUNBA

A welcome to Country and Junba was performed for over 300 passengers at Ngula Jar Island. Two international vessels (registered Uunguu Tour Operators) came ashore and were welcomed by our Uunguu Rangers and Traditional Owners.



**Jeremy Kowan and Barry Williams welcoming visitors.**



**Bevan Stott, Ildephonse Cheinmora, Maria Fredericks, Bernadette Waina and Desmond Williams greeting guests.**

**Below: Margaret Peurmora smoking visitors with cruise ship L'Austral (Ponant) in the background.**



**Above right: Bernadette Waina, Lillian Karadada and Margaret Peurmora heading out to the vessel L'Austral. Also pictured, dancers: Ildephonse Cheinmora, Scotty Unghango, Barry Williams and Uriah Waina, performing Junba for visitors.**



**The feedback from the cruise boat passengers was very positive!**





## ART PROJECT

Four Wunambal Gaambera artists were commissioned by Great Escape, one of our Uunguu Tour Operator partners, to reflect the Wanjina-Wunggurr culture of Wunambal Gaambera people. Artworks by Lillian Karadada, John Paul Karadada, Gemma Unghango and Rosa Marnga, will be hung on the Great Escape vessel in 2019. Here's what artist Lillian Karadada had to say about the project:

*"Working creatively with Great Escape, one of our Uunguu cruise operators that visits our Country, is a really positive step forward. It's also a great opportunity for us, the artists, to share our art and culture with the world."*



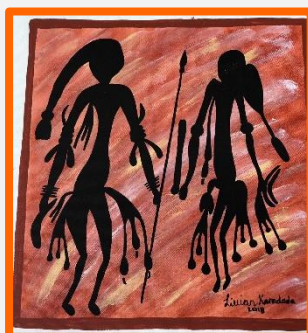
Pictured above in Kalumburu: Great Escape staff (Kylie Bartle and Bree Cardilini) with photographer Cassie de Colling, Margaret Peurmora, Lillian Karadada, Rosa Marnga and Rachel Beadle (UVP Manager).

## KEEPING CULTURE STRONG

We have a new project with Bachelor Institute to work on Wunambal and Gaambera languages. We held two language workshops this year focused on helping Uunguu Rangers and Traditional Owners confidently use language at work. This is especially important for welcoming visitors to Country and talking at cultural sites.

The second workshop held at Munurru was combined with a Junba workshop. Everyone, including visitors camped at Munurru, enjoyed the Junba!

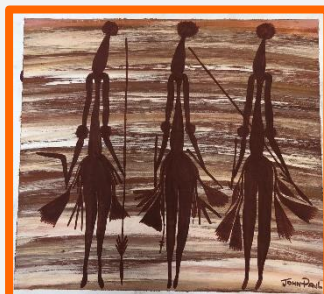
Pictured below are Junba dancers Ezekiel Peurmora, Ethan Karadada, Darryl Williams and Angelo Karadada ready for Junba.



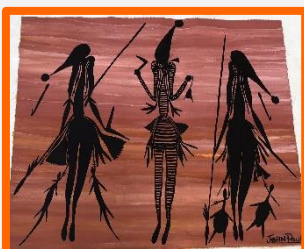
Left: Artwork by Lillian Karadada



Right: Artwork by Rosa Marnga



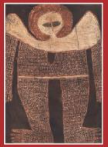
Left and below: Artwork by John Paul Karadada



Above and right: Artwork by Gemma Unghango







## CULTURE CAMP

We held a school camp at Munurru this year. Students from Kalumburu enjoyed learning spear making and damper making by our Rangers who also took them on a rock art tour, and they were lucky enough to visit Punamii-Uunpuu (Mitchell Falls) by helicopter!



We share our healthy country work with our young people: they are the future Uunguu Rangers to look after our Healthy Country Plan.



**Uunguu Ranger, Leonie Cheinmora invests time in teaching future Uunguu Rangers.**

## PROTECTING OUR COUNTRY

### Freshwater Turtle Monitoring

Our Uunguu Rangers are helping scientists keep an eye on wulumara (gonjarra) and dijigudi (long and red-faced, short-neck freshwater turtle) populations at Munurru (King Edward River).



Troy Bidd, Neil Waina and Leonie Cheinmora.



Turtles eat frogs and tadpoles. With cane toads moving in to the area last year, we were worried about the results. However, our monitoring shows populations are strong for now.

**Below: Scientists, Traditional Owners and kids measure freshwater turtles at Munurru.**







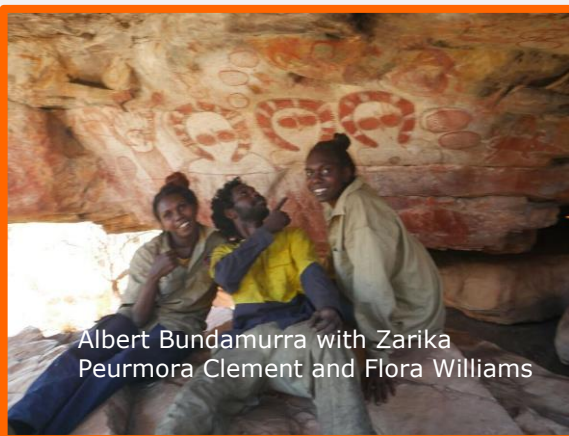
## Fire Walk

In June 2018, 11 Uunguu Rangers and young Traditional Owners walked through the Birramangurey Graa (Lawley River area) on our annual fire walk.



Ranger and Birramangurey Traditional Owner, Albert Bundamurra sums up the experience of walking through his grandfather's country, seeing cultural places and rock art he had not seen previously:

*"It makes me feel good. I feel more better when I'm out here on Country, feels like I heal myself when I come out here, always feel like I'm getting better every time I come out."*



Albert Bundamurra with Zarika Peurmora Clement and Flora Williams



Lawley area is pristine – free of feral cattle and home to healthy numbers of threatened species, including the Golden Bandicoot. One of the highlights was

visiting our Wanjina sites that hadn't been seen in 30 years.

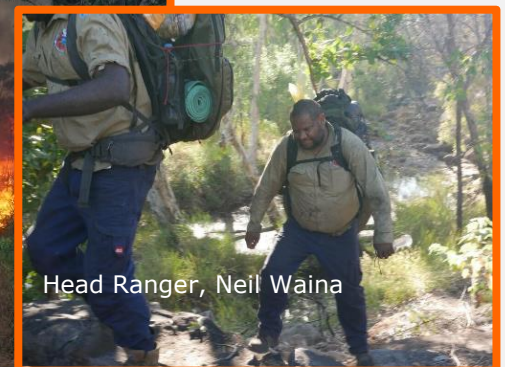
Colleen Mangolamara and Zarika Peurmora Clement



Hylke Vader and Albert Bundamurra



Jakob Brian Mangolamara



Head Ranger, Neil Waina





## WALSH POINT FOCUS

More great news for our visitors and Traditional Owners as we take steps to make our Ngauwudu and Uunguu Coast even better. With the help of a WA Government Coastwest grant, we are investing in better management of Walsh Point – one of the only boat access points along the North Kimberley coast.



This saltwater spot at the end of the Port Warrender Road from Kandiwal on Ngauwudu (Mitchell Plateau) and nearby Crystal Creek will benefit from a Visitor Management Master Plan to improve camping facilities and protect important cultural sites in the precinct.

Recently Traditional Owners, planners and WGAC staff surveyed the area by road



and helicopter to check out how we can improve camping, boating and road and cultural site access for everyone. Safety has long been a concern, visitors need to be made aware of risks and be aware crocodiles frequent the area.

Walsh Point precinct has high conservation values across the board: biological, ecological, social and cultural. The plan will foster sustainable tourism by minimising impact on the coastal zone's cultural sites, biodiversity and water quality.



Pictured below, surveying Crystal Creek: Meaghan Goonack, Terrick Bin Sali, Grant Smart and Steve Vigilante.

New water tanks, toilets, shower and campsites are among facilities included in our Master Plan and Traditional Owners are keen to provide a good saltwater link for visitors to the wider area.



This will open up further community education and economic opportunities for Traditional Owners to be active in the tourism industry which has long operated on our Country. Stay tuned for future developments in the Walsh Point area!



The Walsh Point Planning Group





## POLO SHIRTS ON THE WAY

WGAC has designed some fabulous polo shirts in 3 colours – pindan (for WGAC staff and Board of Directors), light blue and navy. They feature Wanjina, Gwion and Wunggurr on the front and Punamii-Unpuu on the back. They will be available early next year for Wunambal Gaambera people and they will also be sold to visitors.



## UUNGUU LIFE FACEBOOK & INSTAGRAM



Our Facebook Page continues to gather followers. We now have 1,100 Likes!

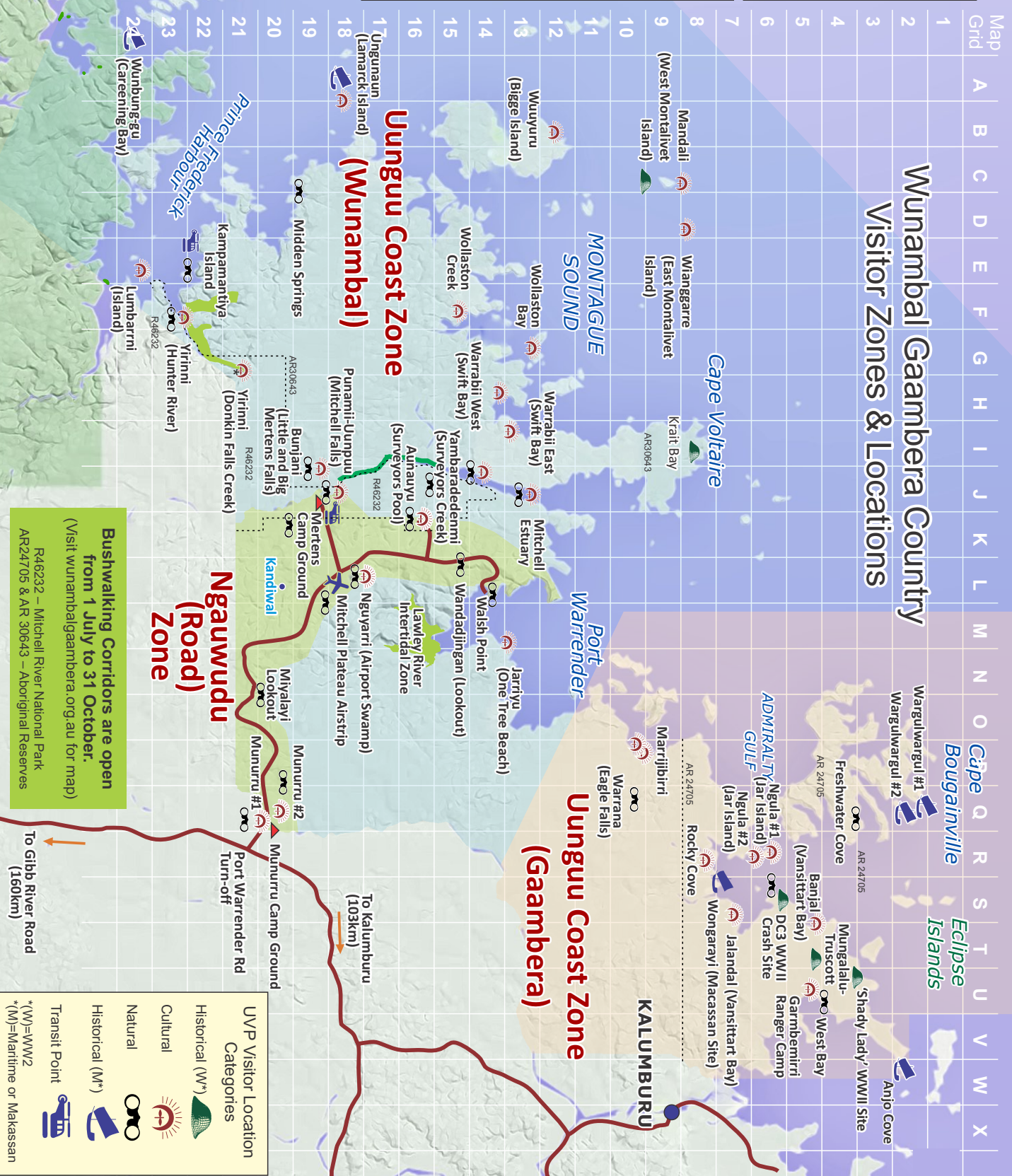
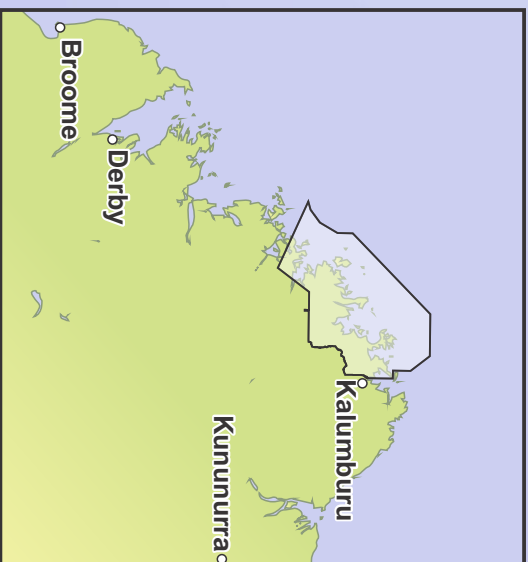
Remember to "like", "follow" and "share" our page and stories for more of the world to see.

We are now active on Instagram! Same name – Uunguu Life.

Wunambal Gaambera  
Aboriginal Corporation  
wishes all Wunambal  
Gaambera families  
a happy and safe Christmas  
and New Year.











# Uunguu Wunambal Gaambera Country

UUNGUU COAST, KIMBERLEY, WESTERN AUSTRALIA



## UVP AND MUNURRU MARKETING

We have been working hard on our marketing this year and in 2019 we will be featuring ads for the UVP and Munurru Camping in all the main Kimberley tourism guides. Here's a taste of what tourists will see about Wunambal Gaambera Country when planning their Kimberley trip:

## Australia's North West Tourism Holiday Planner



### Visiting the North Kimberley? You need your Uunguu Visitor Pass (UVP).

Wunambal Gaambera people welcome you - share our Wanjina Gwion culture and spectacular land and seascapes.

Visit up to 50 Visitor Locations including Punamii-Uunpuu (Mitchell Falls).

Independent travellers: buy online from \$45 pp, family \$110 (Ngauwudu 5 days).

Tour passengers: ensure your operator is UVP-registered.

[www.wunambalgaambera.org.au](http://www.wunambalgaambera.org.au)



### Munurru Campground

#### Visiting Punamii-Uunpuu (Mitchell Falls) and Ngauwudu (Mitchell Plateau)?

Make your base camp Munurru (King Edward River). Spacious, serene campsites set in true Kimberley bush.

- Managed by Traditional Owners
- Easy day access to Punamii-Uunpuu
- River swimming • Wanjina Gwion rock art
- Campfires • Bird watching • Bushwalking
- Toilets • Sorry, no pets

Open May 1–Oct 15 • No bookings required

Adults \$15 per night

Families \$35 per night

[www.wunambalgaambera.org.au](http://www.wunambalgaambera.org.au)

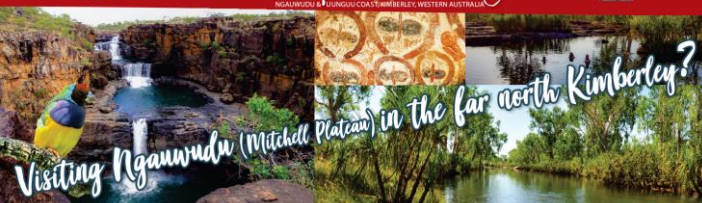


## Derby Visitor Centre - Gibb River and Kalumburu Roads Guide



### Wunambal Gaambera Country

NGAUWUDU & UUNGUU COAST, KIMBERLEY, WESTERN AUSTRALIA



#### Visiting Ngauwudu (Mitchell Plateau) in the far north Kimberley?

**You need your Uunguu Visitor Pass (UVP)**

Wunambal Gaambera people welcome you - share our Wanjina Gwion culture and spectacular land and sea scapes.

Visit up to 50 Visitor Locations including Punamii-Uunpuu (Mitchell Falls).

Independent travellers: buy online from \$45 pp/Family \$110 (Ngauwudu 5 days).

**Tour passengers:** ensure your operator is UVP-registered.

**Make your base camp Munurru** (King Edward River)

Spacious, serene campsites set in true Kimberley bush.

- Managed by Traditional Owners
- Easy day access to Punamii-Uunpuu (Mitchell Falls)
- River swimming


- Wanjina Gwion rock art
- Campfires
- Bird watching
- Bushwalking
- Toilets

Open May 1 – October 15 – No bookings required

Adults \$15, Families \$35 per night – Sorry, no pets.

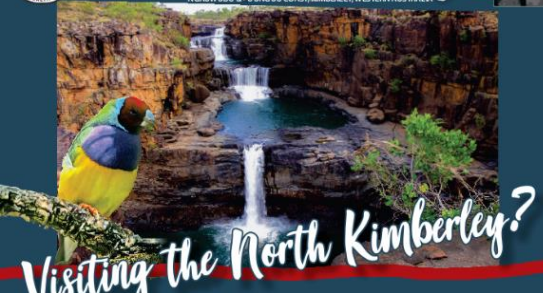
[www.wunambalgaambera.org.au](http://www.wunambalgaambera.org.au)

## Kununurra Visitor Centre – Glovebox Guide Kununurra & East Kimberley



### Wunambal Gaambera Country

NGAUWUDU & UUNGUU COAST, KIMBERLEY, WESTERN AUSTRALIA



#### Visiting the North Kimberley?

**You need your Uunguu Visitor Pass (UVP).**

Wunambal Gaambera people welcome you - share our Wanjina Gwion culture and spectacular land and sea scapes.

Visit up to 50 Visitor Locations including Punamii-Uunpuu (Mitchell Falls).

Independent travellers: buy online from \$45 pp/Family \$110 (Ngauwudu 5 days).

**Camping at Munurru (King Edward River) -** Adults \$15 pp/Family \$35 per night.

**Tour passengers:** ensure your operator is UVP-registered.

[www.wunambalgaambera.org.au](http://www.wunambalgaambera.org.au)





# Uunguu Wunambal Gaambera Country

UUNGUU COAST, KIMBERLEY, WESTERN AUSTRALIA



## OUR PLANS AND BOOKS THAT TELL OUR HEALTHY COUNTRY STORY

